

548

Member Full Version

...insert your project name...

all data without guarantee - Accuracy: +/-10%



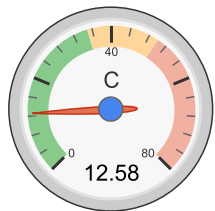
YouTube 321

Welcome Gorazd

Membership Expiry: 10/03/18

[Logout](#) - [Profile](#)
[News](#) | [Toolbox](#) | [Easy View](#) | [Help](#) | [Submit Specs](#) | Language: english ▼

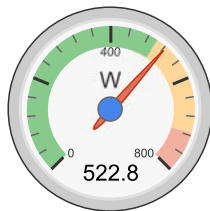
General	Model Weight: 1500 g w/o Drive ▼ 52.9 oz	# of Motors: 1 (on same Battery)	Wing Area: 26.8 dm² 415.4 in²	Drag: simplified ▼ 0.05 Cd	Cross Section: 0 dm² 0 in²	Field Elevation: 500 m ASL 1640 ft ASL	Air Temperature: 25 °C 77 °F	Pressure (QNH): 1013 hPa 29.91 inHg
Battery Cell	Type (Cont. / max. C) - charge state: LiPo 3000mAh - 35/50C ▼ - normal ▼	Configuration: 4 S 1 P	Cell Capacity: 3000 mAh 3000 mAh total	max. discharge: 85% ▼	Resistance: 0.0048 Ohm	Voltage: 3.7 V	C-Rate: 35 C cont. 50 C max	Weight: 77 g 2.7 oz
Controller	Type: max 40A ▼	Current: 40 A cont. 40 A max	Resistance: 0.006 Ohm	Weight: 50 g 1.8 oz	Wire extension battery: AWG10=5.27mm² ▼	Length: 0 mm 0 inch	Wire extension motor: AWG10=5.27mm² ▼	Length: 0 mm 0 inch
Motor	Manufacturer - Type (Kv) - Cooling: Turnigy ▼ - D3548-6 (790) ▼ medium ▼ search...	KV (w/o torque): 790 rpm/V Prop-Kv-Wizard	no-load Current: 1.8 A @ 8 V	Limit (up to 15s): 715 W ▼	Resistance: 0.04 Ohm	Case Length: 48 mm 1.89 inch	# mag. Poles: 10	Weight: 159 g 5.6 oz
Propeller	Type - yoke twist: APC Electric E ▼ - 0° ▼	Diameter: 12 inch 304.8 mm	Pitch: 6 inch 152.4 mm	# Blades: 2	PConst / TConst: 1.08 / 1.0	Gear Ratio: 1 : 1	Flight Speed: 0 km/h 0 mph	calculate



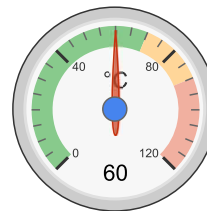
Load:



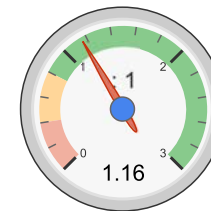
Mixed Flight Time:



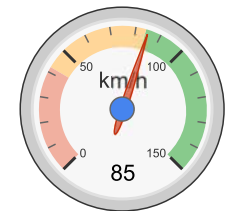
electric Power:



est. Temperature:



Thrust-Weight:



Pitch Speed:

Remarks:

Battery		Motor @ Optimum Efficiency		Motor @ Maximum		Propeller		Total Drive		Airplane	
Load:	12.58 C	Current:	26.16 A	Current:	37.75 A	Static Thrust:	2403 g	Drive Weight:	569 g	All-up Weight:	2069 g
Voltage:	14.08 V	Voltage:	14.14 V	Voltage:	13.85 V		84.8 oz		20.1 oz		73 oz
Rated Voltage:	14.80 V	Revolutions*:	9914 rpm	Revolutions*:	9281 rpm	Revolutions*:	9281 rpm	Power-Weight:	270 W/kg	Wing Load:	77 g/dm²
Energy:	44.4 Wh	electric Power:	369.9 W	electric Power:	522.8 W	Stall Thrust:	1862 g		123 W/lb		25.2 oz/ft²
Total Capacity:	3000 mAh	mech. Power:	309.9 W	mech. Power:	431.6 W		65.7 oz	Thrust-Weight:	1.16 : 1	Cubic Wing Load:	14.9
Used Capacity:	2550 mAh	Efficiency:	83.8 %	Efficiency:	82.5 %	avail. Thrust @ 0 km/h:	2403 g	Current @ max:	37.75 A	est. Stall Speed:	42 km/h
min. Flight Time:	4.1 min			est. Temperature:	60 °C	avail. Thrust @ 0 mph:	84.8 oz	P(in) @ max:	558.7 W		26 mph
Mixed Flight Time:	7.1 min				140 °F	Pitch Speed:	85 km/h	P(out) @ max:	431.6 W	est. Speed (level):	78 km/h
Weight:	308 g						53 mph	Efficiency @ max:	77.2 %		48 mph
	10.9 oz							Torque:	0.44 Nm	est. Speed (vertical):	12 km/h
									0.32 lbf.ft		7 mph
										est. rate of climb:	7.9 m/s

Wattmeter readings

Current: 37.75 A
Voltage: 14.08 V

Tip Speed: 533 km/h
331 mph
specific Thrust: 4.60 g/W

Power:

531.5 W

0.16 oz/W

1562 ft/min

share

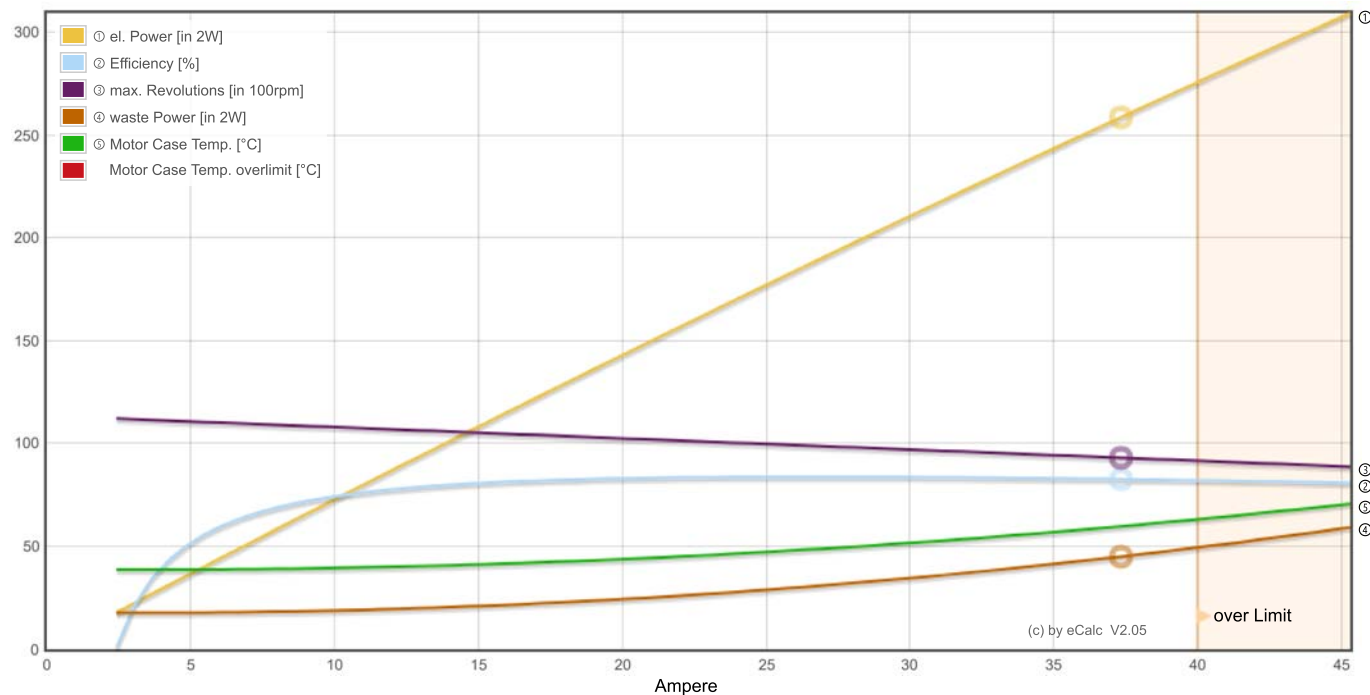
add to >>

Download .csv (0)

<< clear

Propeller rpm	Throttle %	Current (DC)		Voltage (DC)		el. Power		Efficiency		Thrust		Spec. Thrust		Pitch Speed		Speed (level)		Motor Run Time (85%) min
		A		V		W		%		g	oz	g/W	oz/W	km/h	mph	km/h	mph	
1400	13	0.3		14.8		4.6		31.9		55	1.9	11.8	0.42	13	8	-	-	484.3
2100	20	0.7		14.8		10.0		50.0		123	4.3	12.3	0.44	19	12	-	-	225.4
2800	26	1.3		14.8		18.9		62.5		219	7.7	11.6	0.41	26	16	-	-	118.7
3500	33	2.2		14.8		32.7		70.5		342	12.1	10.4	0.37	32	20	-	-	68.4
4200	40	3.6		14.7		52.8		75.5		492	17.4	9.3	0.33	38	24	-	-	42.3
4900	48	5.5		14.7		80.5		78.7		670	23.6	8.3	0.29	45	28	-	-	27.6
5600	55	8.1		14.6		117.2		80.7		875	30.9	7.5	0.26	51	32	-	-	18.9
6300	63	11.4		14.6		164.5		81.9		1107	39.1	6.7	0.24	58	36	-	-	13.4
7000	71	15.6		14.5		223.7		82.6		1367	48.2	6.1	0.22	64	40	53	33	9.8
7700	79	20.9		14.4		296.5		82.9		1654	58.3	5.6	0.20	70	44	65	40	7.3
8400	88	27.3		14.3		384.5		83.0		1968	69.4	5.1	0.18	77	48	71	44	5.6
9100	97	35.2		14.1		489.2		83.0		2310	81.5	4.7	0.17	83	52	76	47	4.3
9281	100	37.8		14.1		522.8		82.5		2403	84.8	4.6	0.16	85	53	78	48	4.1

Motor Characteristic at Full Throttle

**Important Note:**

Before flight recheck your max. current! If your Current, el. Power or RPM are over the manufacturers limits your motor, controller and/or battery may take damage! **Verify before flight by measurment!**

for printing use Landscape format

* The manufacturer limitation is NOT monitored

** Testdata with reduced accuracy

(c) copyright by and intellectual property of Markus Mueller, Solution for All, www.s4a.ch, [info\[at\]ecalc.ch](mailto:info[at]ecalc.ch)
See HTML Source for full and complete copyright notice.
Version: P7.10, 09.10.17 / Data: 16.11.17 with 8359 Motors
translated to english by Markus Mueller

